

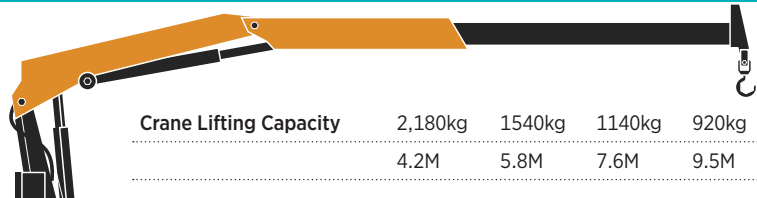
RAW1722 9T Crane Truck



SPECIFICATIONS			
Capacity	2 Doors 3 Seats	Fuel Capacity	360L
Transmission	Auto	Brakes	ABS/VSC
Drive Type	4x2	Tray Size	Length 7.5M Width 2.4M
Engine	6cyl Diesel	Licence	MR Class
Tow Capacity	8,000kg	GVM	16,500kg
Accessories	Bluetooth Compatible, AM/FM Radio, Air Conditioning, Dual Airbags		

CRANE SPECIFICATIONS

- Crane: Effer 105D B-3
-
- Cranesafe Registration
-
- Christmas Tree Lights
-
- Automatic Fold
-



Crane Lifting Capacity	2,180kg	1540kg	1140kg	920kg	700kg
	4.2M	5.8M	7.6M	9.5M	11.6M

STANDARD MINE FITMENT

3 Point Access (Trucks)	Falling Object Protection (FOPS)	Reflective ID Number	Trailer Air Brakes
.....
ABS Fitted Vehicles	Fire Extinguisher/First Aid Kit	Reflective Tape	UHF Radio 40/80 Channel
.....
Airbags	Flashing Amber Beacon	Reversing Beeper	Wheel Chocks
.....
Auto headlights ON	Floor Mats	Safety Handrails	Whip Aerial
.....
Battery Isolator	High Mounted Rear Lights	Safety Triangles	
.....	
Cabin Mesh	In-Vehicle Monitoring System (IVMS)	Seat Covers	
.....	

EXTRA FITMENT AVAILABLE ON REQUEST

- Additional Fire Extinguisher (2.5kg, 4.5kg or 9.0kg)
-
- Driver Fatigue Management System (DSS)
-

Whatever it takes to get you there.

1800 CAR 4 HIRE | www.rawhire.com.au

